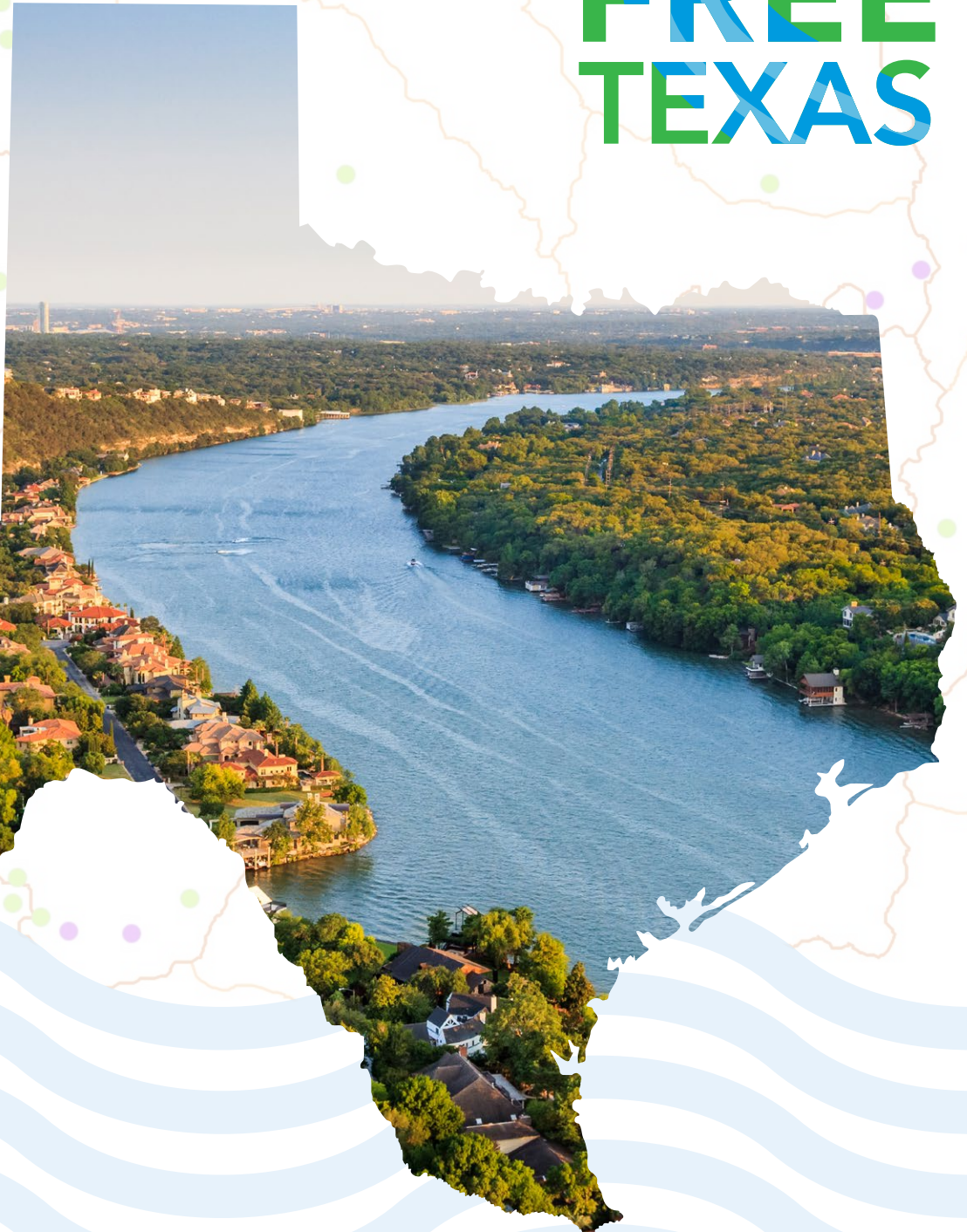
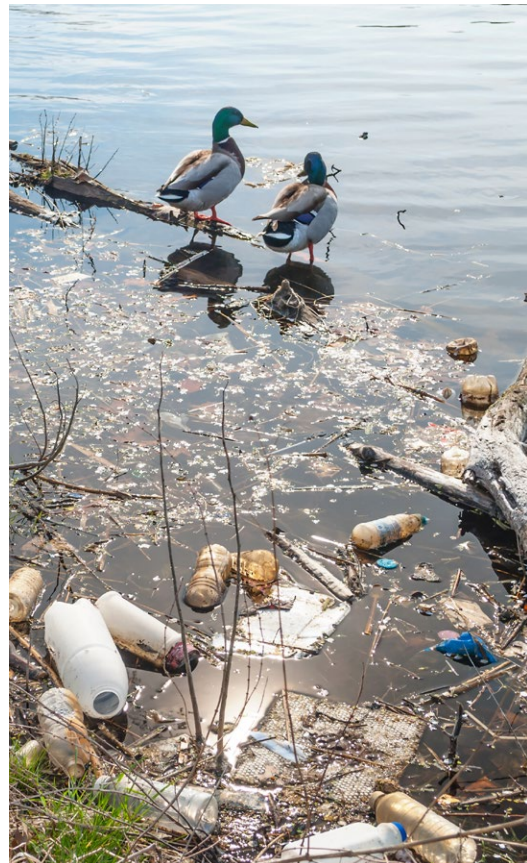


TRASH FREE TEXAS



Connecting volunteers to litter cleanup opportunities

TrashFreeTexas.org



WHAT IS THE PROBLEM?

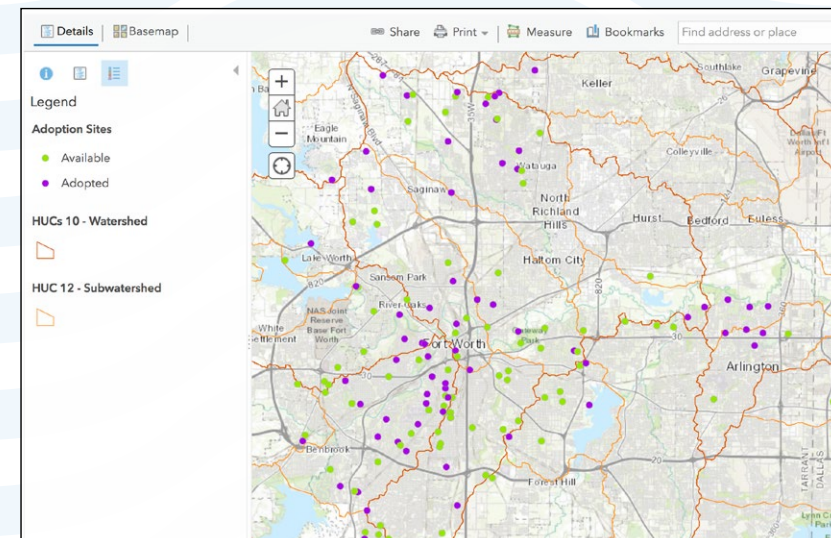
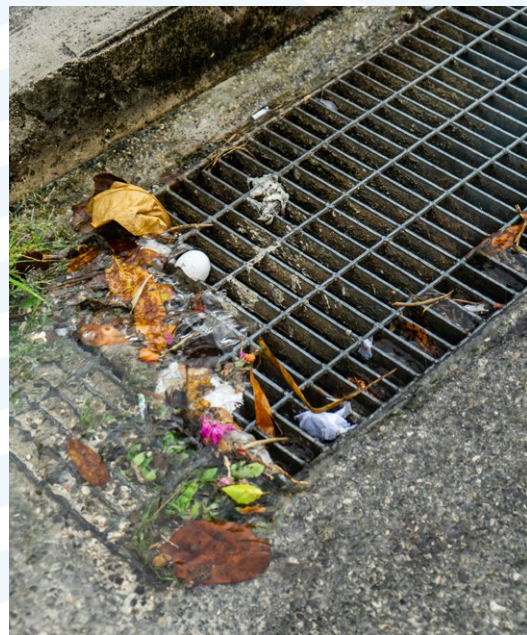
Litter is everywhere – in our parks and rivers, alongside roadways and on our beaches. Litter is unsightly, and it negatively impacts businesses, tourism and community pride. It also poses a threat to human health and safety, as well as wildlife and the environment. Approximately 80 percent of the trash found in our local streams, lakes and rivers comes from land-based sources, and eventually finds its way into the Gulf of Mexico and our oceans. We must prevent this trash from ever reaching our waterways by removing it from our communities.

CHALLENGES TO OVERCOME

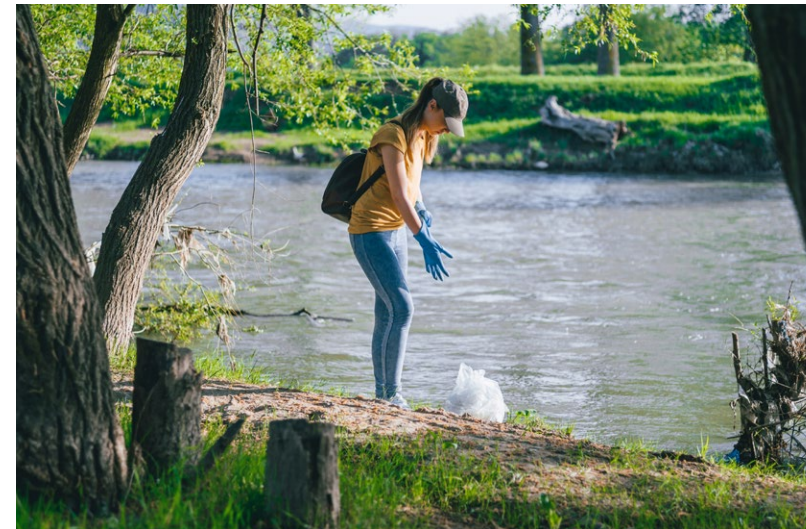
- Adoptions are managed by different entities in each community across Texas.
- Volunteers wanting to adopt areas are not always sure who to contact.
- Volunteers do not know which places are available for adoption in their community.
- Information is not streamlined into a single system, and many communication strategies are not reaching the next generation of volunteers.
- Less than 1% of roads, streams, trails, transit stations and other public lands have been adopted by volunteers.

Trash Free Texas addresses these challenges by working with communities and organizations across the state to connect people to places that need routine litter cleanup activities.

Trash is a big problem in Texas – in fact, it is 'the size of Texas.'



Partners working to end littering in Texas have developed a Mapping Tool that connects users to areas available for adoption in their local watershed. Additional resources are needed to support this project and enhance the functionality of the Mapping Tool.



BE A PART OF THE SOLUTION



SUPPORTER - Will you provide funding?

You can help grow the reach and value of Trash Free Texas through monetary and in-kind sponsorship. Your support will empower volunteers by giving them the tools they need to make positive improvements in their communities. This includes upgrading the user interface of the Mapping Tool and providing a platform for users to enter cleanup data online, as well as the development of a mobile application for data collection in the field.



COORDINATOR - Will you provide sites to be adopted?

Provide data for adoptable and adopted sites to Trash Free Texas and get your community on the map. You maintain control over program management – we help connect you to the volunteers. Help us collect information from all adopt-a programs and partners to provide public, real-time data on which sites have been adopted. This will make it easier for government leaders and Keep Texas Beautiful (KTB) affiliates to strategically identify and connect volunteers with locations that need to be adopted.



PARTNER - Can you tell others about the project?

Share Trash Free Texas with volunteers and stakeholders in your community. Help us create an online community where we can educate volunteers and the public to encourage positive environmental change. Provide feedback on the website, mapping interface and other tools as the program expands to help us respond to the needs of our communities and volunteers.



VOLUNTEER - Will you adopt a site today?

Use the Trash Free Texas website to adopt a site and do your part to keep litter out of our waterways. Your volunteer efforts to remove litter, aquatic trash and debris are critical to our communities. When we connect people to places, we help them take ownership of their community. This reduces littering and illegal dumping which results in cleaner lands and healthier aquatic ecosystems and lowers the burden on local governments.

TRASH FREE TEXAS



QUICK FACTS

- TrashFreeTexas.org is a website with a GIS tool to connect your adoptable spots to your residents.
- All Texas coordinators are welcome – reach out today to get started.
- Program coordinators maintain full control of program management.
- Grants, donations and shared missions help to keep the tool FREE to all Texas communities.
- All financial donations are tax-deductible – please visit www.trashfreetexas.org/support for details, and thank you!

THROUGHOUT TEXAS, AND BEYOND...

Partners across Texas are providing critical feedback to help us evolve the tool into a statewide tool. National entities, like U.S. EPA and Keep America Beautiful, have indicated that this platform could later expand to other states.

PROGRAM PARTNER CONTACTS

Visit our website for Program Contacts

CONTACT US

Trash Free Waters Program

The Meadows Center for Water and the Environment
Texas State University
601 University Drive • San Marcos, TX 78666
Contact@trashfreetexas.org
(512) 245-7376

**TRASH
FREE
TEXAS**

TrashFreeTexas.org

FOUNDING PARTNERS

And many more partner communities across Texas

